



How to make it work

Social alarming, assisted living and the safety & security ecosystem

Euralarm Industry Forum 2026

Benoît Stockbroeckx | Technical Manager

Introduction to social alarming and assisted living



Social Alarming Systems

Social alarming systems enable vulnerable individuals to raise emergency alerts for immediate assistance and safety.

Assisted Living Support

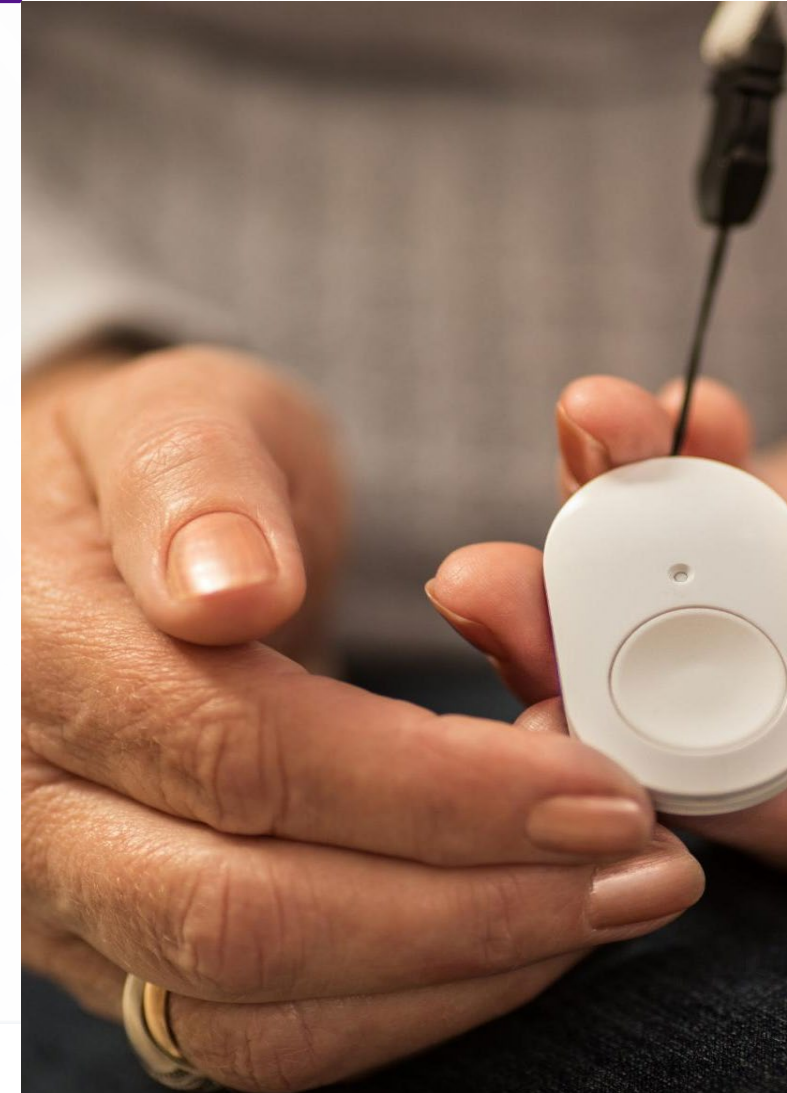
Assisted living integrates monitoring, automation, and communication technologies for continuous support and independence.

Integration with Safety Industry

Combining social alarming with fire and intrusion detection creates comprehensive safety and security ecosystems.

Importance of Trust and Regulation

Successful solutions depend on trust, standards, regulation, and meaningful system integration for user reliability.



Electronic fire safety and security industry context



Core Industry Functions

The industry focuses on fire detection, intrusion alarms, access control, VSS, and emergency communication for safety and security.

Reliability and Compliance

High reliability and strict regulatory compliance ensure 24/7 monitoring and life-critical performance in safety systems.

Integration with Assisted Living

Existing fire safety systems integrate social alarming functions, supporting assisted living and social care solutions.

Sector Convergence

Digitalization blurs boundaries between safety, security, and care sectors, enabling innovative connected technologies.



Existing Technologies and Products Available Today

Wide Range of Safety Devices

Numerous products like emergency response systems, panic buttons, and sensors support assisted living and social alarming today.

Integration with Monitoring Centers

Devices connect via alarm panels or IP gateways to professional centers enhancing response through video and audio verification.

Modular System Design

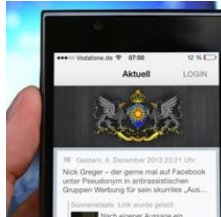
Modular products combine life safety, security, and care sensors into unified platforms for flexibility and effectiveness.

Proven Technology Reduces Risks

Using certified and field-tested equipment minimizes technical and operational risks in social alarming solutions.

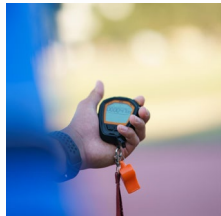


Social Alarming Systems and Monitoring Services



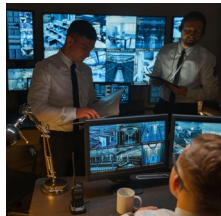
Build Social Networks

App and home devices to support social contacts and networking



Alarm Devices and Sensors

User-activated devices like pendants and automatic sensors detect emergencies and trigger alarms for rapid assistance.



Monitoring and Communication

Triggered alarms connect to monitoring centers or caregivers through reliable communication protocols and redundant paths.



Integrated Emergency Response

Effective systems integrate escalation procedures and coordinate with emergency services and local care providers.



Enhanced Daily Living Support

Smart home devices assist with daily activities, improving comfort and independence for assisted living residents.

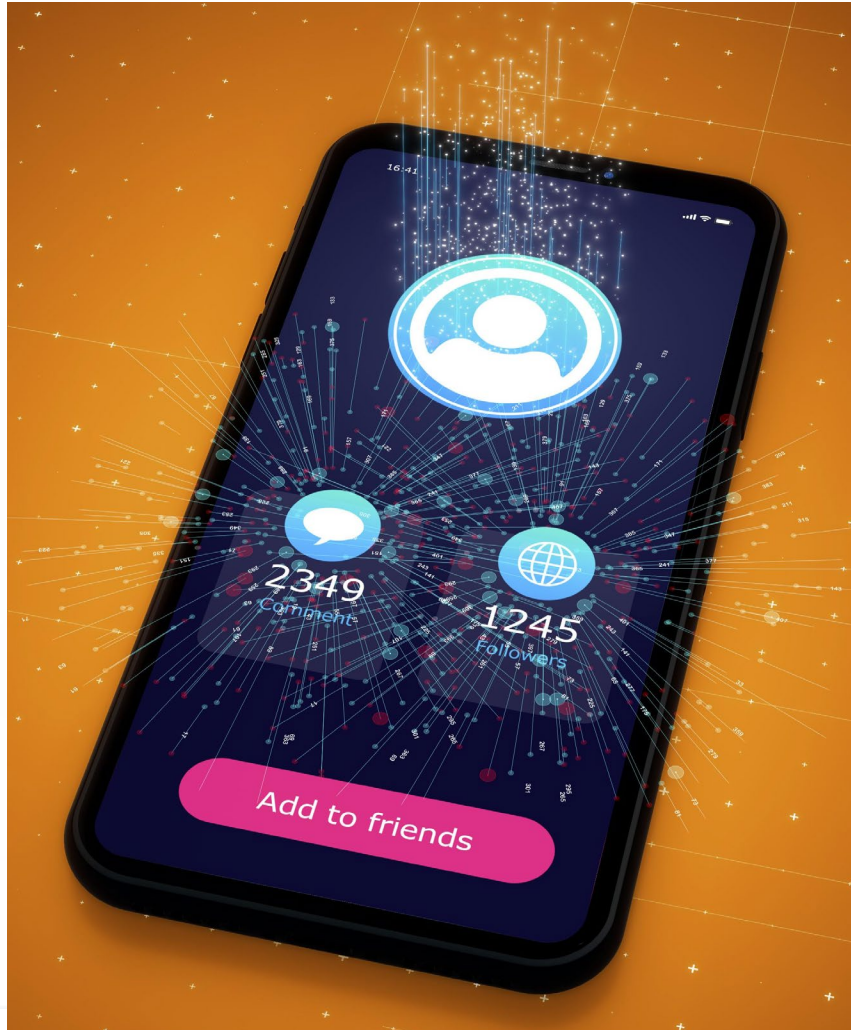
Integrated Safety and Security

Combining fire safety and security systems provides contextual awareness to detect potential risks efficiently.

Unobtrusive Monitoring

Monitoring technologies ensure resident safety while respecting privacy and dignity in assisted living environments.

Role of Smartphones and Mobile Applications



Central Role in Assisted Living

Smartphones serve as key communication hubs in social alarming and assisted living ecosystems, connecting users and caregivers.

Remote Management and Diagnostics

Mobile applications enable remote system monitoring, diagnostics, and maintenance, reducing service costs.

Challenges in Usability and Security

Ensuring ease of use for elderly users and maintaining cybersecurity are vital challenges for mobile alarm systems.



Enhanced Social Interaction

Voice assistants and care robots enable intuitive social interaction and support through voice commands and reminders.

Accessibility Benefits

These technologies improve accessibility for users with mobility or visual impairments by integrating with safety and security systems.

Safety and Privacy Challenges

Reliance on cloud services raises concerns about data privacy, certification gaps, and potential safety limitations.

Standards and Interoperability

Importance of Standards

Standards ensure performance, reliability, and testing requirements for fire and security systems across Europe.

Fragmented IoT Standards

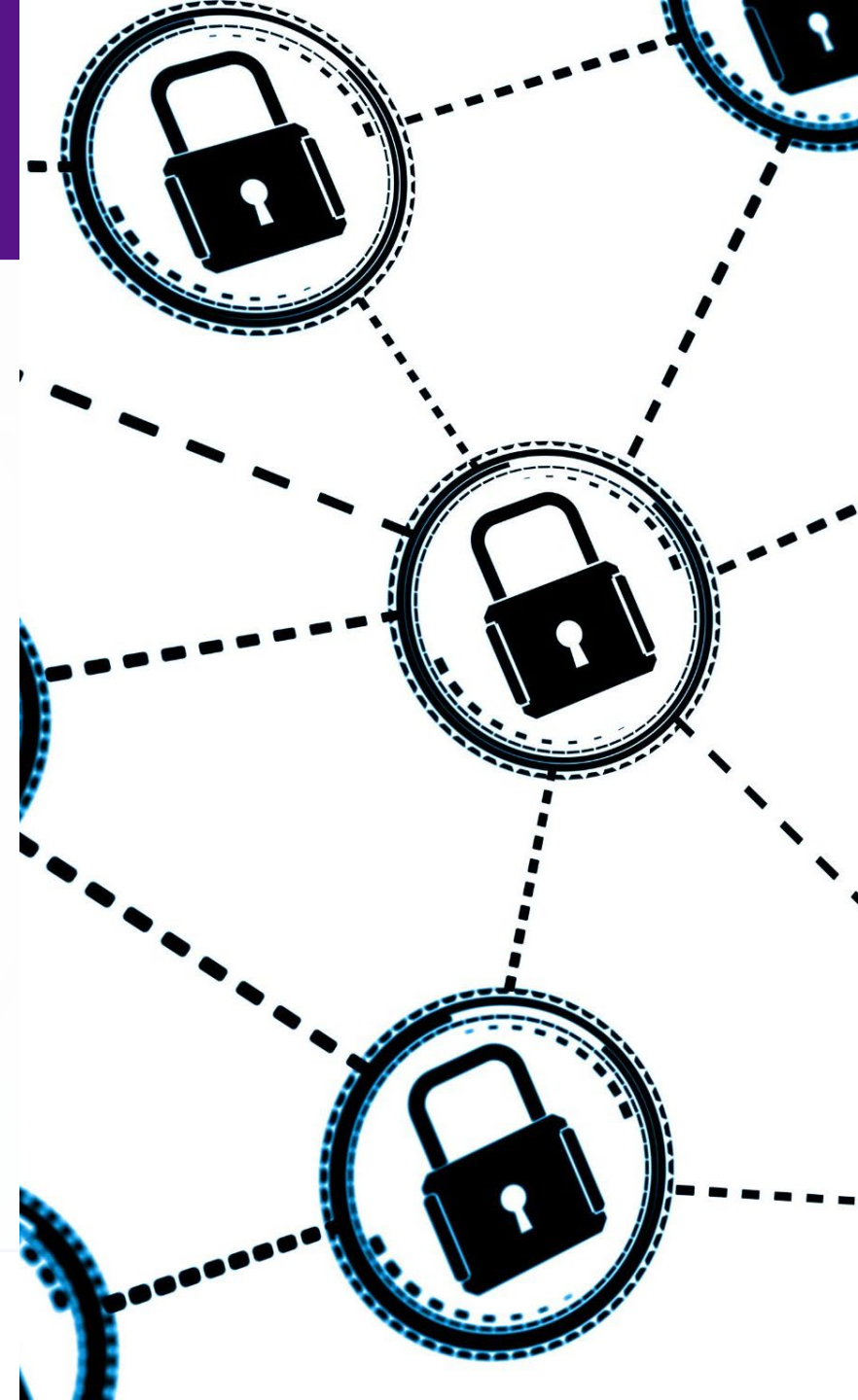
Assisted living and IoT devices often follow fragmented or voluntary standards, leading to challenges in integration.

Harmonized Interfaces and Protocols

Harmonized interfaces and open protocols prevent vendor lock-in and promote long-term system viability.

Role of Standardization Bodies

Standardization bodies bridge safety-critical systems and consumer IoT through certification and guidelines.



Cybersecurity Requirements for Connected Safety Systems



Essential Cybersecurity Principles

Core principles include encryption, authentication, secure updates, and network segmentation to protect connected safety systems.

Risks of Cyber Attacks

Unauthorized access and denial-of-service attacks can compromise safety systems and put users at risk.

Balancing Security and Usability

Strong security measures must be balanced with ease of use, especially for vulnerable or non-technical users.

Accessibility and Inclusive Design Obligations

Legal and Ethical Requirements

Accessibility is mandated by law and ethics for social alarming and assisted living systems to support all users.

Inclusive Hardware and Interfaces

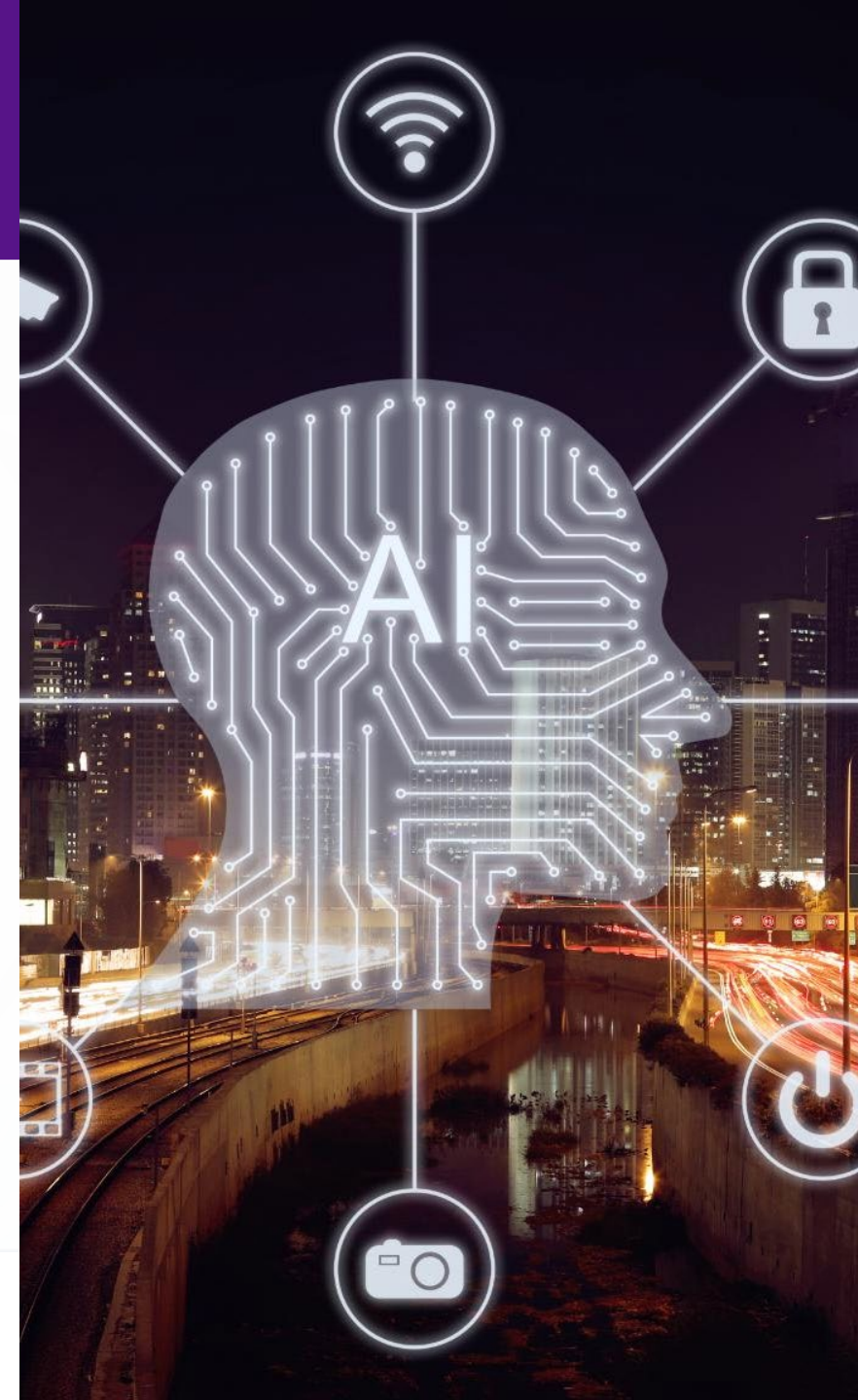
Design of hardware and user interfaces must accommodate physical, sensory, and cognitive impairments for usability.

Clear Signaling and Redundancy

Fire and security industry practices of clear signaling and redundancy help achieve effective inclusive design.

European Accessibility Regulations

European regulations guide the implementation of accessibility in social alarming and assisted living solutions.



Privacy and Data Protection Rules



GDPR Compliance Essentials

Key GDPR rules include data minimization, lawful processing, transparency, and obtaining user consent.

Extending Security Practices

Traditional security methods like confidentiality and controlled access apply to digital data governance as well.

User Trust Importance

Building and maintaining user trust is crucial for successful adoption of privacy and data protection rules.

Reliability and performance expectations



Critical System Reliability

Life safety systems must operate flawlessly during power outages and network failures to protect lives.

Redundancy and Fail-Safe Design

Redundant components and fail-safe design ensure continuous system operation despite failures.

Maintenance and Certification

Regular maintenance and certifications ensure system reliability and predictable performance over time.

Service-Level Agreements

SLAs establish clear performance expectations and responsibilities for service reliability and uptime.

Regulation as a Driver of Trust and Market Development

Building Trust Through Regulation

Regulation defines minimum safety, quality, and privacy standards, enhancing consumer confidence in social alarming and assisted living.

Balancing Innovation and Costs

While regulations promote safety, they can also slow innovation and increase costs for manufacturers and service providers.

Supporting Market Scalability

Well-designed regulation fosters scalability, cross-sector cooperation, and professionalization in assisted living services.

Implementation Challenges

Manufacturers and service providers face practical challenges when complying with regulatory requirements in assisted living.



Cross-border differences in Europe

Regulatory Differences

Countries in Europe have varied regulations affecting social alarming and assisted living technologies.

Reimbursement Models

Reimbursement schemes differ across borders, influencing market accessibility and business operations.

Market Maturity

Market maturity for social alarming and assisted living varies significantly across European nations.

Opportunities for Alignment

EU initiatives promote standardization and mutual recognition to ease cross-border market challenges.



Making it work: Integration, cooperation and future outlook



System Integration

Strong integration of safety, security, and care systems is essential for effective social alarming and assisted living.

Industry Cooperation

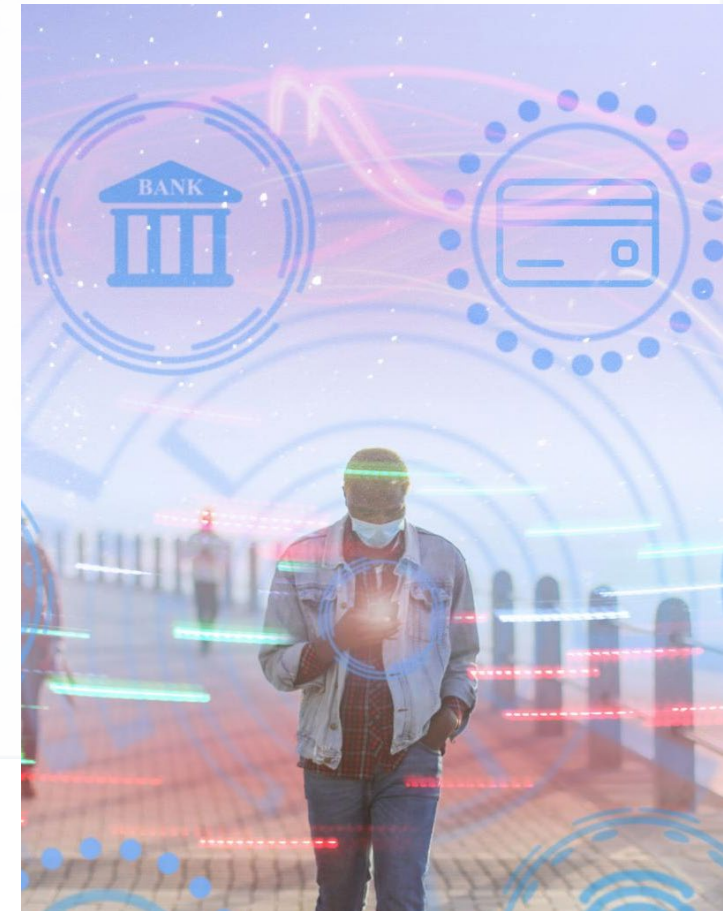
Cooperation between industry players and care organizations fosters innovation and practical solutions in assisted living.

User Trust Focus

Building and maintaining user trust is critical to the adoption and success of assisted living technologies.

Leadership Opportunity

The fire safety and security industry can lead this convergence by combining technical excellence with service focus.



Thank you!

for a safer and more secure Europe